



# Installation and Usage Guide

Date: Friday, 5 March 2021  
Authors: Richard Mullins



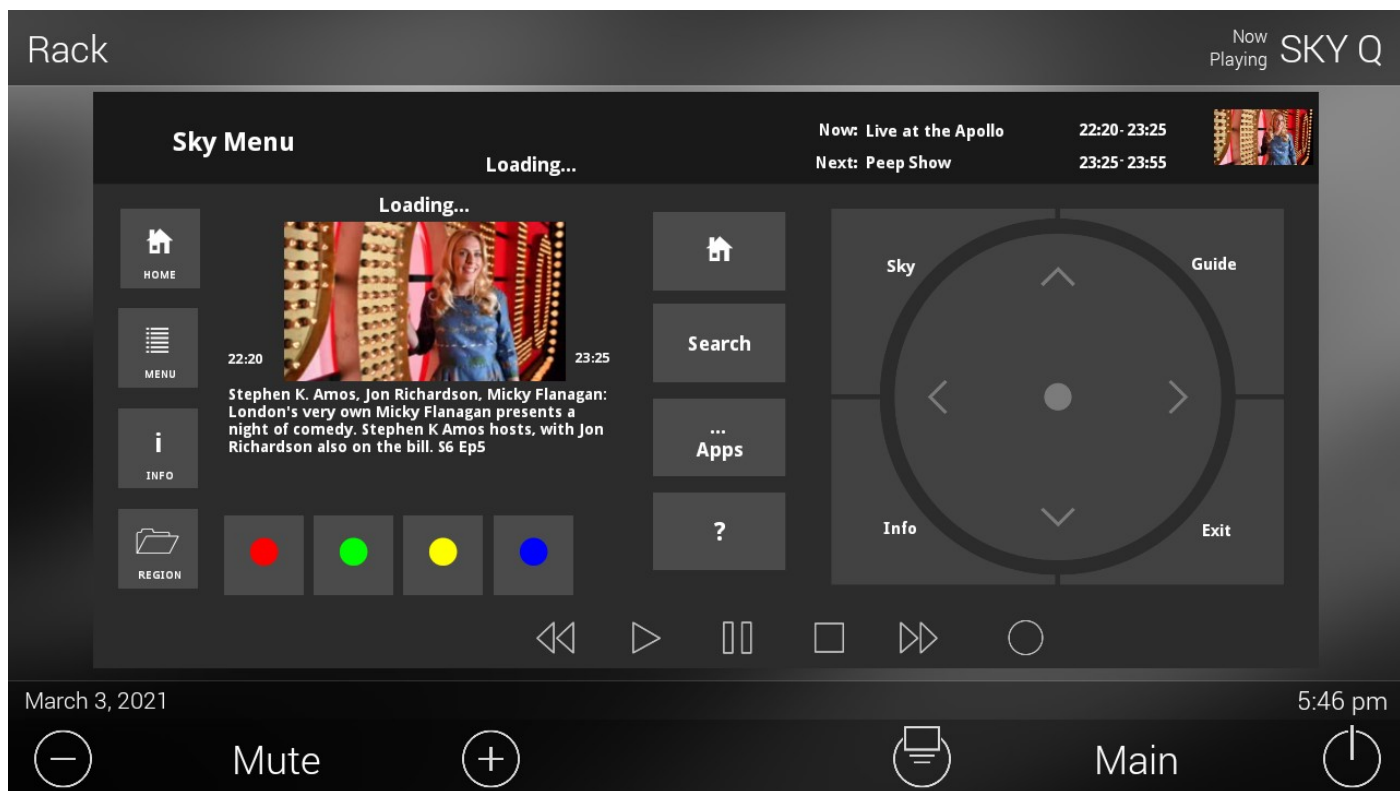
# Contents

<b>Overview</b> .....	<b>3</b>
<b>Features</b> .....	<b>4</b>
- Metadata for the two upcoming programmes on the Info screen.....	4
<b>Installation</b> .....	<b>5</b>
Import TCM.....	5
Add the module to your project.....	6
Install Core Module.....	6
Network Settings.....	7
<b>System Parameters</b> .....	<b>8</b>
Licence.....	8
MODEL.....	8
Debug mode and logging.....	8
<b>Two Way Commands</b> .....	<b>9</b>
Send Channel.....	9
<b>CHANGELOG</b> .....	<b>10</b>

## Overview

Sky is a British satellite broadcast service provider. Chowmain has developed an IP based module that provides control over UK based Sky set top boxes. This IP module eliminates the need to attach infra red emitters to the set top box and is compatible with the Sky Q and Sky Q mini boxes. On top of IP control the module also provides a channel list which shows the current and next playing information.

The module is licenced per site, so you can use as many modules as needed on the same site with a single licence.



## Features

- Works with
  - Sky Q
  - Sky Q Silver
  - Sky Q Mini
- Channel listing with channel logo, now playing and next playing information
- Choose the region the channel listing is from (automatically prompts on first run)
- All Sky codes available for use in your macros
- Metadata for the currently playing programme on each page of the UI
- Now and Next programme info on each page of the UI

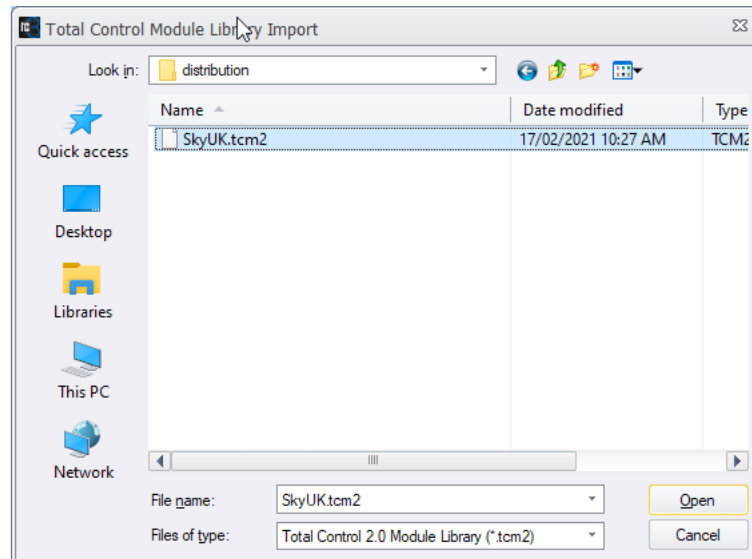
- Metadata for the two upcoming programmes on the Info screen

## Installation

To install the module, you will need to do the following

### Import TCM

From the file menu, Import TCM Files



## Add the module to your project

In Step 4. Add Other Drivers. You will need to install both the Core module (once) into a shared room and then an interface module into all of the rooms you wish to use.

### Install Core Module

Step 1 - select a room for the module

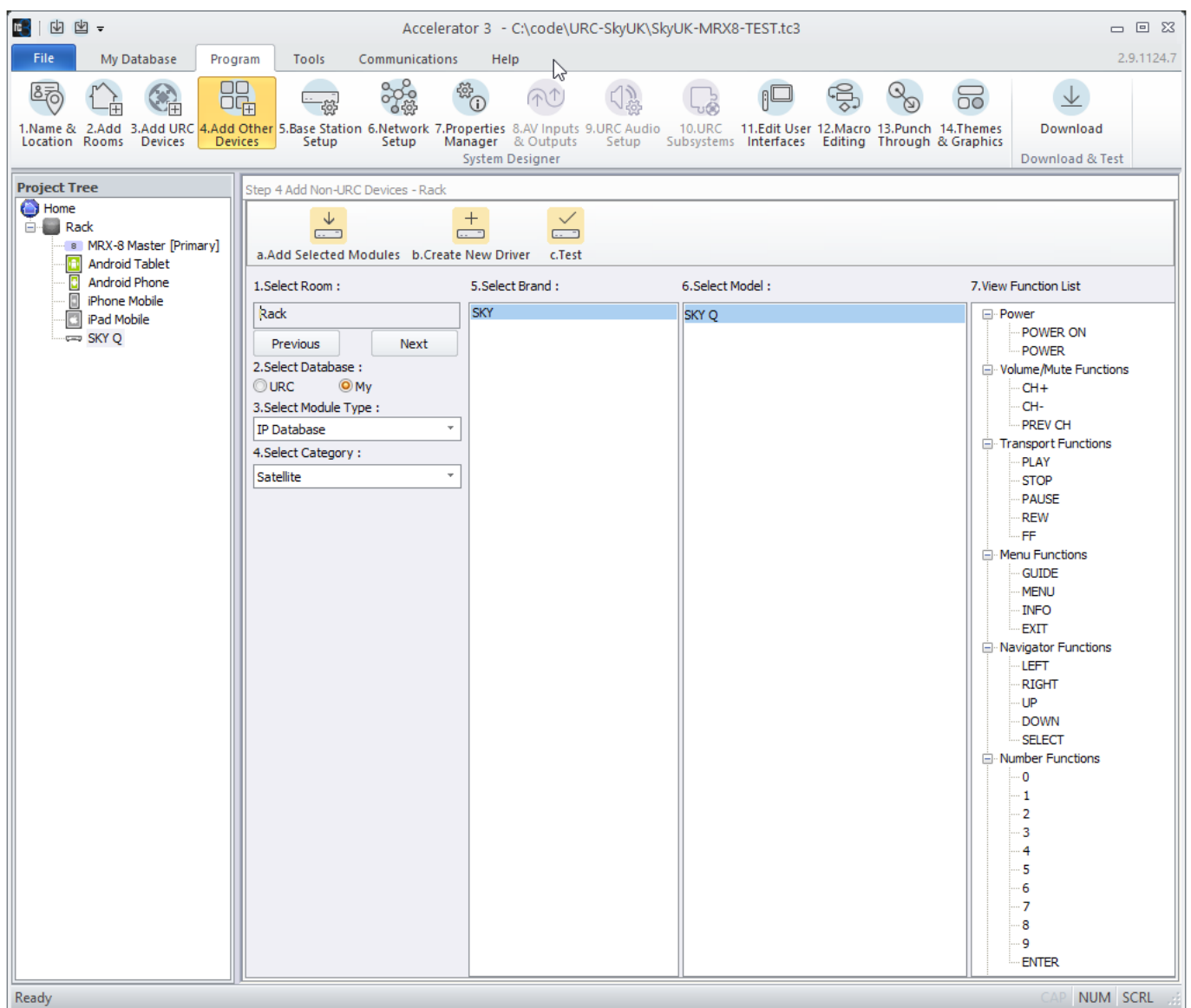
Step 2 - select My

Step 3 - select IP Database

Step 4 - select Satellite

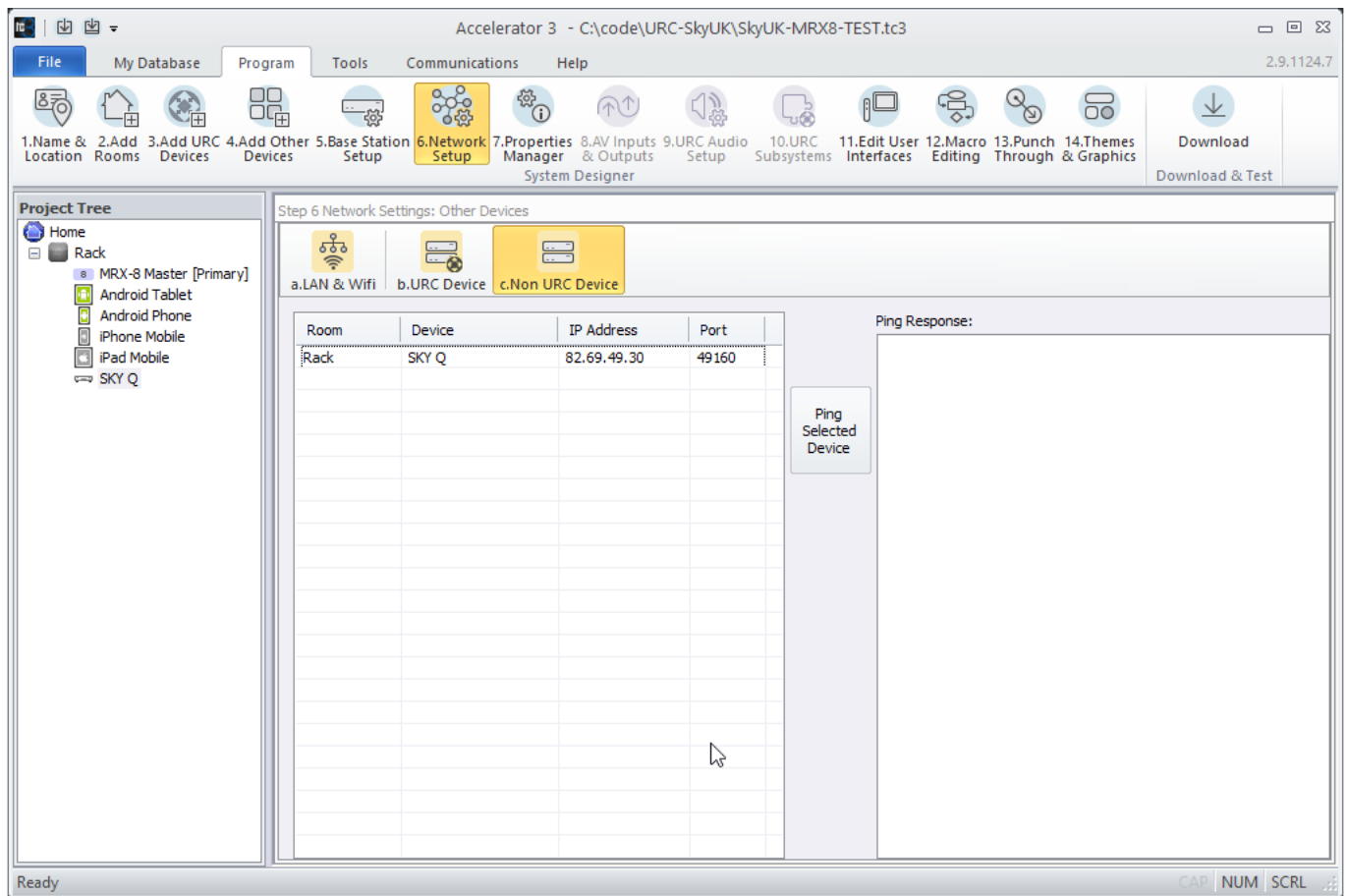
Step 5 - select SKY

Step 6 - SKY Q (double click)



## Network Settings

Finally go to Step 6. Network Settings and Choose Non URC Devices. In the IP Address field enter the IP address for the Sky Q set top box. Optionally you can enter a value for the port (if you've require something different from the default) or just leave it on the default - 49160.



## System Parameters

The Sky module only requires a single parameter, but there are several available.

All system parameters are entered in the following format

KEY=VALUE

The following table details the system parameters that work with this module.

<b>KEY</b>	<b>VALUE</b>
LICENCE	The licence
MODEL	Used to set an alternate model
DEBUG	Puts the module into its debug mode

### Licence

The licence code you were given when you purchased the module. If this is left blank the module will automatically enter a trial period.

### MODEL

By default the MODEL takes the value of Q, but this could be used in the future to support set top boxes that use alternate configurations.

MODEL=Q

### Debug mode and logging

TO enable logs, you need to add the DEBUG parameter and set it to ON. This will write log files to the processor that can be retrieved via FTP. See the Logging section at the end of this document for details.

DEBUG=ON



## Two Way Commands

The Sky module has a one Two Way commands available, for directly setting a station.

### Send Channel

The Send Channel command can be used to directly set a channel.

<b>Parameter</b>	<b>Type</b>	<b>Acceptable Values</b>	<b>Example</b>
------------------	-------------	--------------------------	----------------

Channel	number	100 - 999	101
---------	--------	-----------	-----

# CHANGELOG

## Version 20171106

- Initial Release

## Version 20171123

- Updated the genre data to map to channels rather than the API genres
- Added immediate sending of queue to speed up cursor control
- Added Sky device image for use with Accelerator 2.0

## Version 20180224

- Updated to enforce use of the module parameter MODEL=Q to work with the Q6 firmware

## Version 2.0.6

- Updated version for Accelerator 2.0 and 3.0

## Version 2.0.7

- Added invalid licence page to UI